



A beautiful place to live, work, and make friends.



The Heart of Stuart

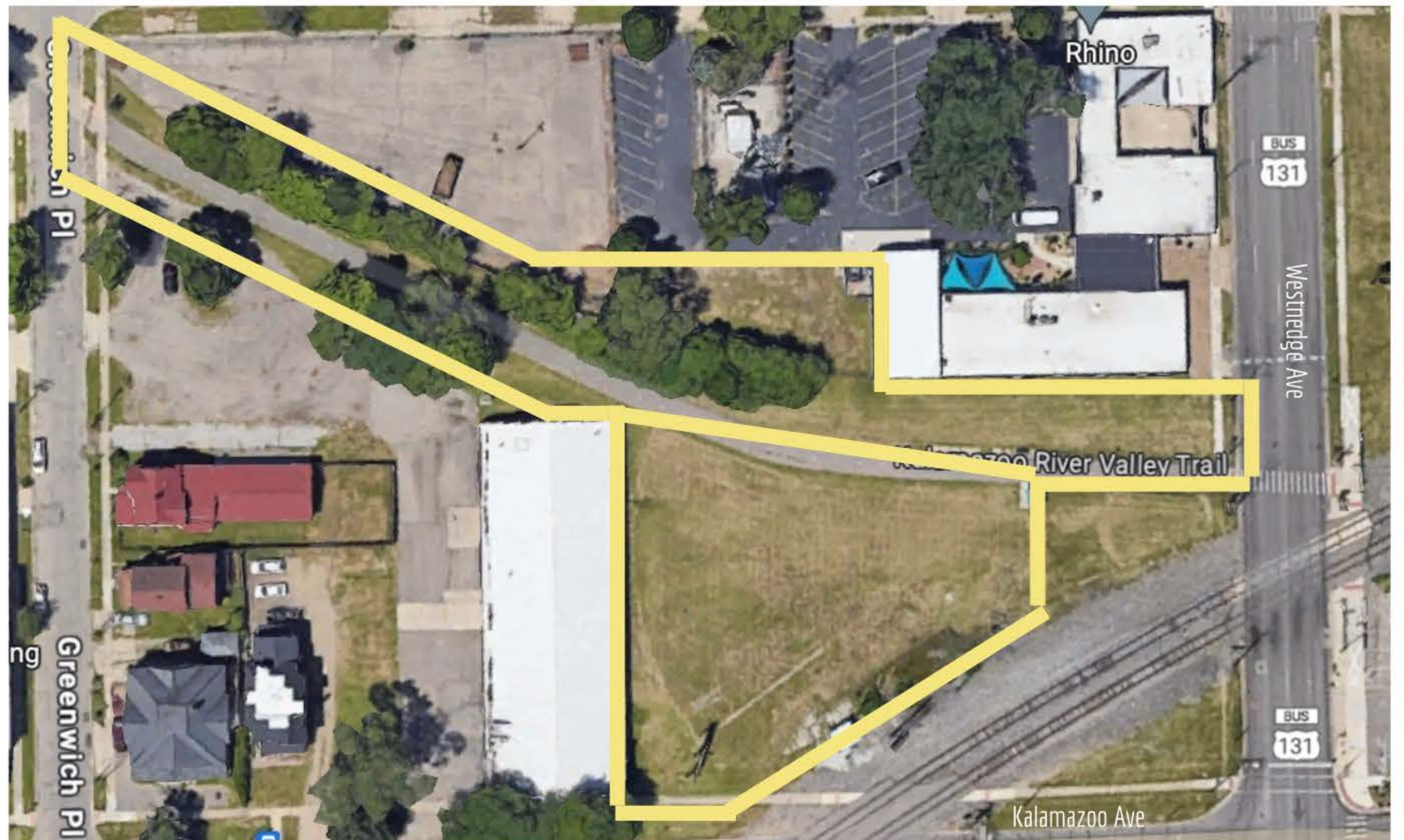
Looking for residents and businesses to help us turn this public space into the heart of Stuart.

The Stuart Historic Neighborhood Association and the City of Kalamazoo are working together to re-design the public space that runs along the Kalamazoo River Valley Trail (KRVT) at the northwest corner of Kalamazoo and Westnedge Ave. The Stuart Historic Neighborhood Association sees this as an opportunity to turn this public space into the heart of Stuart.

The name of this neighborhood project is called the **KRVT Placemaking Project**. Let us explain.

The **KRVT** is a key element to this project because we are so proud to have a part of this 22-mile long, paved trail run through our neighborhood. The KRVT gives the residents of Stuart a good reason to get outside to go for a run, a bike ride, or a nice, relaxing walk, as well as, it creates a connection between our neighborhood to downtown Kalamazoo and so much more!

Placemaking is the other key element to this project as it is the collaborative process we are using to guide our work to redesign the public space. Visit pps.org for more information.



The public space for the KRVT Placemaking Project at the northwest corner of Kalamazoo and Westnedge Ave.

The first step to this project is to gather ideas and feedback from residents, businesses, and city and county staff through a series of placemaking design workshops in July 2024.

KRVT PLACEMAKING — SAT, JULY 20, 10 - 2
DESIGN WORKSHOP FOR **RESIDENTS**

KRVT PLACEMAKING — MON, JULY 22, 10 - 2
DESIGN WORKSHOP FOR **BUSINESSES**

KRVT PLACEMAKING — TUES, JULY 23, 10 - 2
DESIGN WORKSHOP FOR **CITY & COUNTY**

Workshops are scheduled from 10 am - 2 pm at Woodward School. Light refreshments provided. Registration is FREE.

For more information about the workshop and the list of businesses we hope to partner with on this project, turn to pages 3 - 5 of this newsletter.



Summer Events in Stuart

June - August 2024

- June 8** Coffee Chat with Neighbors | 10 - 2 | Factory Coffee, 213 Frank St.
- June 11** Board Meeting | 6 pm | 530 Douglas Ave.
- July 9** Board Meeting | 6 pm | 530 Douglas Ave.
- July 20** KRVT Placemaking Workshop RESIDENTS | 10 - 2 | Woodward School
- July 22** KRVT Placemaking Workshop BUSINESSES | 10 - 2 | Woodward School
- July 23** KRVT Placemaking Workshop CITY/COUNTY | 10 - 2 | Woodward School
- August 6** Neighborhood Annual Meeting | 6 pm | Woodward School
- August 10** Coffee Chat with Neighbors | 10 - 2 | Factory Coffee, 213 Frank St.
- August 21** Back to School | 5 - 7 | Woodward School
- August 24** Yard Sale | 9 - 3 | Stuart Neighborhood
- August 24** MusicFest | 5 - 7 | Woodward School

Go to stuartneighborhood.org for more details and full calendar of events.

Ways to Get Involved

Attend. Volunteer. Donate

Woodward School Artists from each grade (K-5) were awarded art supplies for their participation in The Stuart Flower Art Coloring Contest on May 24, 2024.

This opportunity was created for all the students of Woodward through our partnership with Ellen Nelson Artist.

We are so proud to have Woodward School in our neighborhood!

Stuart welcomes your support. Click the donate button on our website and make a donation to Support Woodward School.





KRVT Placemaking Design Workshop Flyer

Stuart

KRVT PLACEMAKING DESIGN WORKSHOPS

DO YOU WANT
TO HELP US TURN
THIS PUBLIC SPACE INTO THE
HEART OF THE
STUART
HISTORIC NEIGHBORHOOD



Northwest corner of Kalamazoo and Westnedge Ave

KRVT PLACEMAKING
DESIGN WORKSHOP FOR **RESIDENTS**

SATURDAY, JULY 20



RESIDENTS
REGISTER HERE

KRVT PLACEMAKING
DESIGN WORKSHOP FOR **BUSINESSES**

MONDAY, JULY 22



BUSINESSES
REGISTER HERE

KRVT PLACEMAKING
DESIGN WORKSHOP FOR **CITY & COUNTY**

TUESDAY, JULY 23



CITY & COUNTY
INVITED BY EMAIL





KRVT Placemaking Design Workshop Flyer

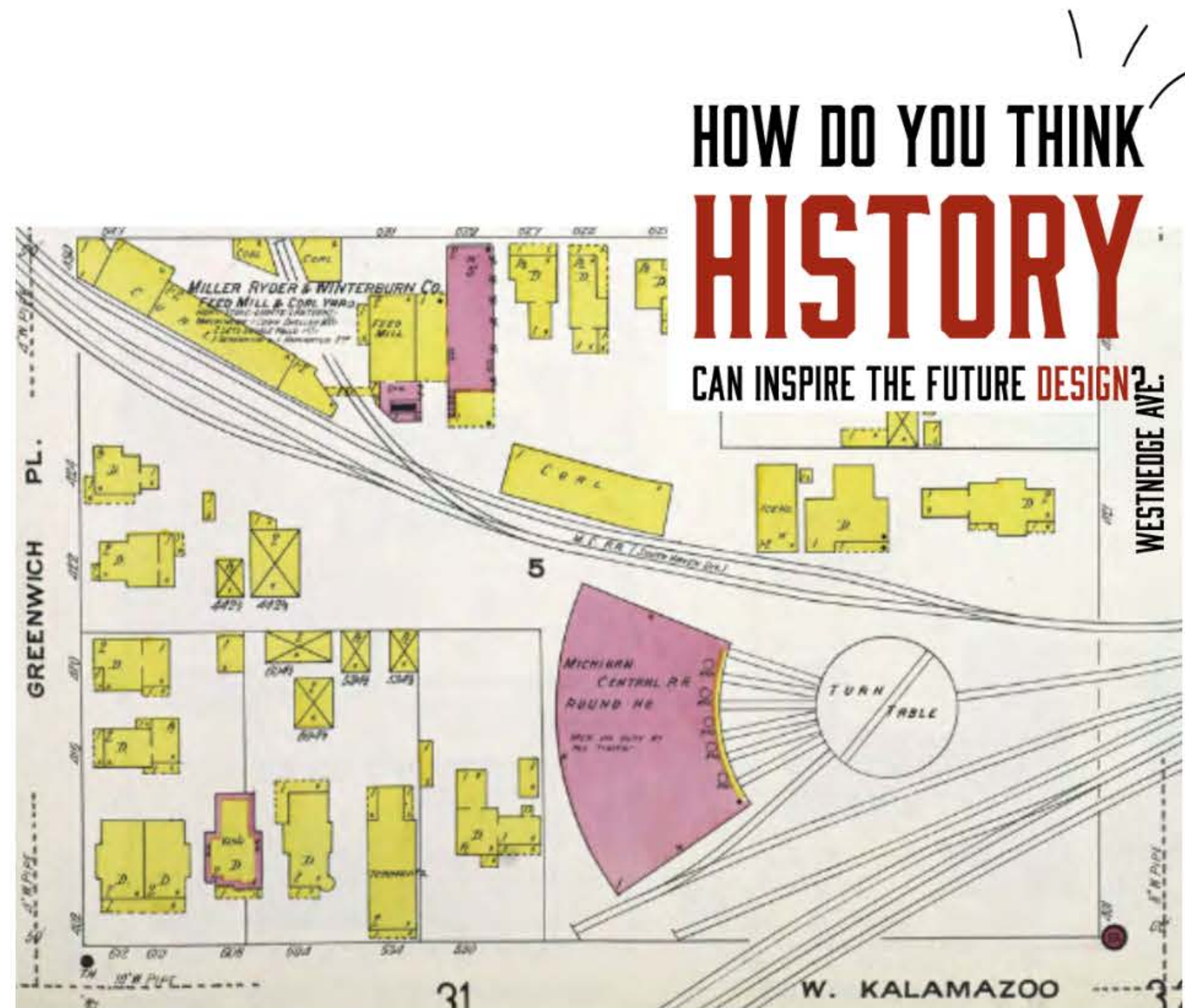
WORKSHOP PURPOSE & GOALS

The Stuart Historic Neighborhood Association is planning workshops with residents, businesses, and city and county staff to re-imagining and provide feedback on the public space near the KRVT at the northwest corner of Kalamazoo and Westnedge Ave.

The goal is to use the ideas and feedback generated from the workshops to develop an action plan for this area and to pursue external funding and volunteer support for short- and long-term improvements

WORKSHOP AGENDA

- 10:00 Project Overview
- 10:30 "Designing Successful Public Spaces" Stations
- 12:00 Lunch
- 12:30 2D Model Space Activity
- 1:30 Next Steps



1800s Historical Map of the Kalamazoo & Westnedge Ave. Corner

This map shows that in the 1800s the site was used for the Kalamazoo – South Haven Railroad Roadhouse and Turn Table. The turn table was approximately 75 feet in diameter and included six stalls made of bricks, making this a very active area with trains coming and going in multiple directions.

HOW DO YOU WANT THE SPACE TO BE USED?





KRVT Placemaking Project - List of Potential Businesses

Stuart

KRVT PLACEMAKING PROJECT List of Potential Business Partners

Below is the list of businesses that the Stuart Historic Neighborhood Association is planning to contact and invite to participate in this project. Please email stuarthistoricneighborhood@gmail.com if your business is interested in partnering with us on this project.

Allen Chapel AME Church	Kalamazoo Bicycle Club	Rhino
Arborist Services of Kalamazoo	Kalamazoo College	Southwest Michigan First
Bee Joyful	Kalamazoo Community Mental Health	St. Augustine School
Bell's Brewery	Kalamazoo Junior Girls Organization	St. Vincent Depaul Thrift Shop
Bike Coop - Kalamazoo College	Kalamazoo Public Library History Room	Stuart Bed and Breakfast Inn
Boys & Girls Club	Kalamazoo Sportwear and Regalia	Superior Fence
Colleen Wolpert Studio	Kalamazoo Valley Museum	WMU Surplus Store
Comensoli's	Kara's Kottages	Tacos El Perico
Comfort Inn Downtown Kalamazoo	Koa Fund	Up & Under
Commercial Real Estate	Kzoo Skate Zoo	VanderSalm's
Cookie's Creole n' Soul	Kzoo Swift	Victorian Bakery
Disability Network of Kalamazoo	LDS Church	Vine Neighborhood Association
Douglas Association	ModeShift Kalamazoo	Walgreens
Douglass Community Association	Mysa Well Being	Water Street Roasters
Drue Salon	Nelson Breech Nave, AIA, Architect	West Main Hill Association
Ellen Nelson Artist	Northside Association	Westwood Association
Event Center	Northside Early Learning Center - YMCA	WMU Low Vision Studies
Fireplace and Grill Shop	OCBA Landscape Architects	WMU Office of Sustainability
Gazelle Sports	Open Roads	Woodward School
Henderson Castle	Pedal	Zhang Legacy Collections Center
Hoop House - Kalamazoo College		

